



RELIABILITY & INNOVATION

Pchem 3

Fully-automated – Dual arm Clinical Chemistry Analyser
up to **500** tests / hour with ISE module on board





Pchem 3



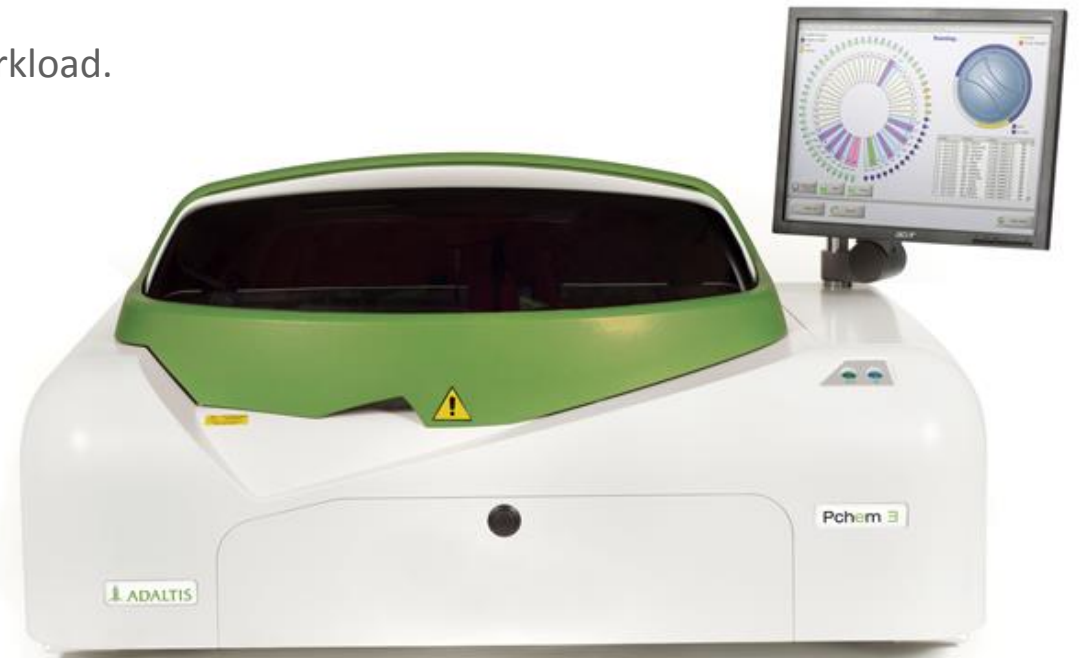
The Pchem-3 is a fully automated analyser for clinical chemistry operating in the upper segment of mid-sized laboratories range of 300-500 tph.

Pchem-3 is suitable as a benchtop instrument or floor standing version to deliver fast and accurate diagnosis of the samples: the only control you need is to match instrument throughput with your workload.

The Pchem-ease of use software gives you a hassle-free work flow routine in several demanding settings.

A Pchem 3 analyser is well prepared for the integrated analysis of electrolytes by ISE methodology.

Adaltis presents the Pchem instruments as a complete laboratory system, with a CE-marked Pchem reagent panel of 56-assays, ready for use, ensuring you a fast forward daily routine in your laboratory.



Features and Specifications

- Up to 500 tests per hour with ISE, up to 300 photometric tests / hour.
- 59/79 sample/calibrator/control positions on primary tubes (Ø12÷13mm × 75/100mm) and sample cups (3ml).
- Analytical methods: end point mono or bichromatic, fixed time, kinetic, differential sample blank
- Integrated ISE module for: Na⁺, K⁺, Li⁺, Cl⁻ in serum, plasma and diluted urine.
- 48 parameters on line plus diluent with 50ml R1/20ml R2 vials.
- Mono, double, triple reagents method.
- Reaction temperature: +37°C ± 0.1°C
- Automatic dilution of the samples.
- Calibration with linear/non linear curves up to 8 points, auto dilution of the calibration curve (linear regression, linear piece-wise, cubic spline, polynomial).
- Quality Control menu, including Levy-Jennings plots.
- Bar-code reader integrated for samples and reagents (optional).
- Arm equipped with liquid level detector (capacitive) and shock sensor.
- Instrument type: random access or batch programmable.
Each sample position can be programmed for STAT/emergency testing samples



Features and Specifications

- High Precision Micro-metering pump to dispense reagents and samples (no syringe).
- Reagent volume: 1÷400 microliters.
- Sample volume: 1÷300 microliters.
- Typical reaction volume: 200 microliters.
- Wavelengths on-board: 8 filters, from 340nm to 700nm plus one free position.
- Light source: Long life halogen lamp (2000 hr.)
- Photometric linearity: 0÷3.0 OD.
- Reading cuvette: 80 on-board re-washable made in (Bionex©).
- Cuvette washing: automatic washing station.
- Water consumption: 3-4 liters per hour (in full operation).
- All in one touch screen computer.
- L.I.S.: Bi-directional connection.
- Operating System: Windows© 8.1.
- Environment temperature 18-32°C.
- Bench top Dimensions: 114x75x60 cm. / Weight: 80 kg.
- Floor stand version Dimensions: 190x77x132 / Weight: 155 kg.



Technical Specifications

System	random access, batch, STAT
Throughput	300 tests/hour (up to 500 tests/hr with integrated ISE module, on request)
Number of arms	2
Number of reagents positions	48 parameters on line plus diluent
Number of samples / calibrators / controls	59/79
Analytical methods	end point, fixed time, kinetic, differential, diff. sample blank, bichromatic
ISE Module	yes, Na ⁺ , K ⁺ , Li ⁺ , Cl ⁻ (optional)
Diluter	2 micro-metering pump
Reagent volume	1 ÷ 400 µl
Sample volume	1 ÷ 300 µl
Typical reading volume	200 µl
Calibration curves	linear regression, piecewise, cubic spline, polynomial
Automatic dilution	automatic / on request
Reading cuvettes	80 automatic re-washable
Reaction temperature	+37°C ± 0.1°C
Wavelengths	from 340 to 700 nm

Light source	long life halogen lamp (2000 hours life)
Photometric linearity	0 ÷ 3.0 OD
Cuvette washing	automatic washing station
Water consumption	less than 4 liters / hour
Reagent cooler	up to 14 °C below ambient temperature
Bar-code	yes (optional)
Real-time electronics	modular, SMD
Power supply	100 ÷ 240 Vac
Personal Computer	external, all in one (Touch screen, PC)
Peripherals	Cd rom, HD > 40Gbyte
Printer	external laser
Operational system	Windows ® 8.1
Interface to LIS host	Ethernet
Environment temperature	18 ÷ 32°C
Environment RH	30 ÷ 70 %
Dimensions	114x75x60 cm (WxDxH), floor stand version 190x77x132 cm
Weight	80kg, floor stand version 155 kg

Software

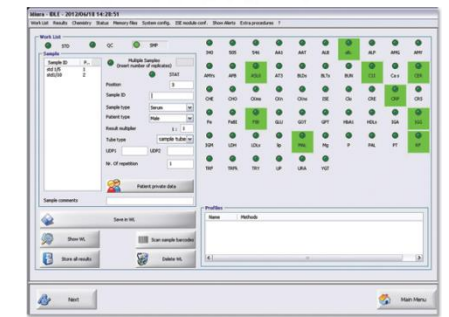
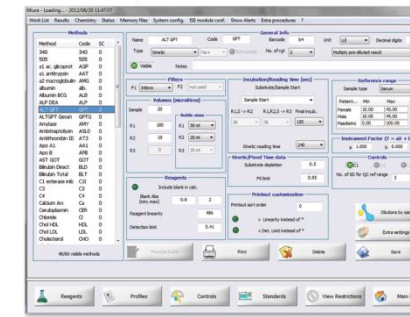
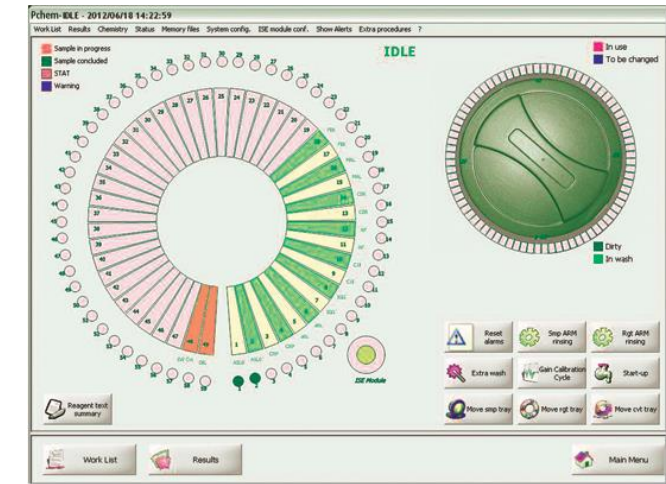
Pchem Family software makes your life easier in the lab

The Pchem Family is a fully automated benchtop family of three high end clinical chemistry analysers and one semi automated analyser. The Pchem Family includes an extensive line of clinical chemistry reagents according recommendations of IFCC & DGKC.

All three fully automated Pchem instruments use the same software structure and graphical interface - providing you a significant shorter learning curve in trainings and operation of the Pchem instruments and reagents. Pchem Family software is based on Windows® operating system.

A user friendly interface assists the operator and simplifies the daily routine work:

- Real time check of liquid levels.
- Real time check of patient results.
- QC with Levy-Jennings plot on three levels.
- Graphic presentation of work session.
- Positive identification of reagents gives the end user the assurance to work without compromises on quality.



CHEMgen

Clinical Chemistry Reagent Product Line

The Pchem family simplifies your routine work with a complete CE-IVD marked reagent panel:

- 56 assays:
 - 28 enzymatic and substrate parameters
 - 28 plasma proteins
- Ready to use
- Stable formulations based on IFCC & DGKC recommendations for serum, plasma, urine samples
- All Pchem applications are validated on Pchem analysers – a perfect fit!



You can find additional information about Fully Automated Clinical Chemistry Pchem Family Analysers



**Genuine random access analysers
for 120-500 tests / hour & dedicated reagents**

<http://www.adaltis.net/products/ivd-instruments/clinical-chemistry/>

Adaltis is dedicated to customer satisfaction and will do the utmost to respond quickly to your needs.

We look forward to an exciting and jointly profitable future with partners like you.

Adaltis S.r.l. Headquarter
Production and Development
Plant

Via Luigi Einaudi 7
Guidonia di Montecelio
00012 Rome, Italy

Tel: + 39 0774 5791

Fax. + 39 0774 353085

Customer Care Center:
e-mail: info@adaltis.net

Sales and Marketing Office
e-mail: sales@adaltis.net

Order handling and Logistics
e-mail: order@adaltis.net

Pchem Tech. Assistance:
pchem.service@adaltis.net

For more information
Contact us directly or visit our new website at:

www.adaltis.net

