

# MOLECULAR DIAGNOSTICS TESTING SOLUTIONS

EXCELLENT PERFORMANCE OF RT-PCR TESTS FOR ACCURATE DIAGNOSIS & TRUE SCREENING

## MOLgen

### RESPIRATORY PANEL (RT5) KIT

REF: MERESP05 - 100 RXNS

MOLgen Respiratory Panel (RT-5) Kit is a multiplex one-step real-time RT-PCR assay for the qualitative detection of: Influenza A, Influenza B, Human Respiratory Syncytial Virus A, Human Respiratory Syncytial Virus B, SARS-CoV-2.

SARS-CoV-2 is of primary concern for patients and clinicians. Other respiratory pathogens can cause nearly identical symptoms, therefore the **Molgen Respiratory Panel (RT5)** offers a frontline test to help diagnose and distinguish respiratory infections.

#### EFFECTIVE

Accurate identification to aid diagnosis and fast treatment for effective patient care.

#### ACCURATE

Multiplex real-time PCR with high sensitivity and specificity.

#### CONVENIENT

Integration with molecular automation from Adaltis for convenient laboratory workflow.

#### Specimen Types

- Nasopharyngeal swab
- Oropharyngeal swab
- Bronchoalveolar lavage fluid (BALF)

#### Workflow

- Automated Extraction – EXTRA lab
- Automated Extraction – eLab
- Real Time qPCR - AMPLiLab

CE-IVD



## MOLgen

### MTBC/NTM RT-PCR KIT

METBNT25 - 25 RXNS

METBNT100 - 100 RXNS

MOLgen MTBC/NTM Real Time PCR Kit is designed for the qualitative simultaneous detection of DNA of MTB Complex (MTBC) and non-tuberculous mycobacteria (NTM) of clinical interest.

MTB is the second leading cause of death after HIV from an infectious disease and a major contributor to antimicrobial resistance. Mycobacteria cause a variety of illnesses, including tuberculosis, which has significant public health implications.

The **MOLgen MTBC/NTM Real Time PCR Kit** allows for rapid and accurate diagnosis, critical for effective MTB / NTM differentiation for infection control and antimicrobial therapy.

#### RAPID

Molecular approach to MTB/NTM identification, directly from clinical samples. Avoids long culture times.

#### ACCURATE

Multiplex real-time PCR with high sensitivity and specificity to differentiate MTB / NTM infections.

#### CONVENIENT

Integration with molecular automation from Adaltis for convenient laboratory workflow.

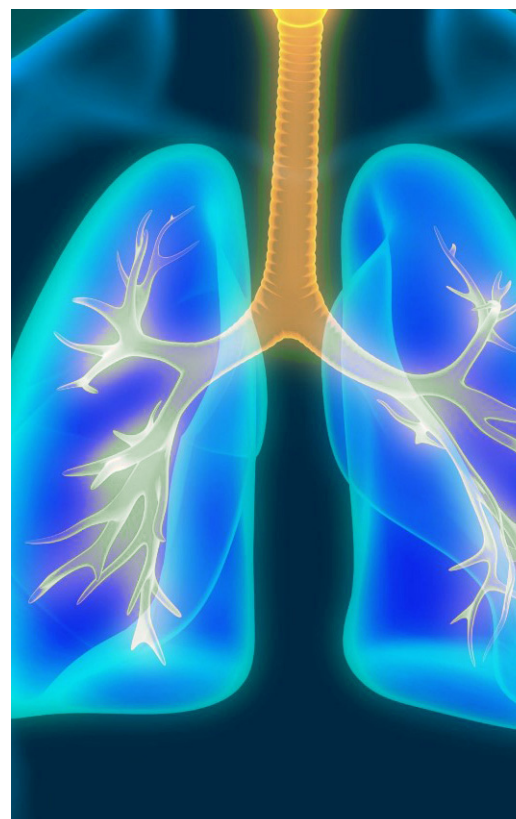
#### Specimen Types

- Sputum
- Bronchoalveolar lavage fluid (BALF)

#### Workflow

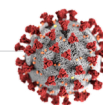
- Automated Extraction – EXTRA lab
- Automated Extraction – eLab
- Real Time qPCR - AMPLiLab

**ADALTIS**  
RELIABILITY & INNOVATION



## RESPIRATORY DISEASES

Code	Kit Name	Format	Number of Tests
MERESP05	<ul style="list-style-type: none"> <li><b>MOLgen Respiratory Panel RT-5 Kit *</b></li> </ul> <p>Reagent kit is intended for the qualitative detection of <b>Influenza A, Influenza B, Human Respiratory Syncytial Virus A, Human Respiratory Syncytial Virus B, SARS-CoV-2</b> by Reverse Transcription (RT) and Real Time Polymerase Chain Reaction (PCR) from RNA extracted from human respiratory specimens such as nasopharyngeal swabs, oropharyngeal swabs and bronchoalveolar lavage fluid (BALF).</p>	4 vials	100
MESARS-COV-2	<ul style="list-style-type: none"> <li><b>MOLgen SARS-COV-2 Real Time RT-PCR Kit *</b></li> </ul> <p>Reagent kit is intended for the qualitative detection of Novel Coronavirus (SARS-CoV-2), by Reverse Transcription (RT) and Real Time Polymerase Chain Reaction (PCR) from RNA extracted from human respiratory specimens such as nasopharyngeal swabs, oropharyngeal swabs, salivary specimens and bronchoalveolar lavage fluid (BALF).</p>	4 vials	100
ME155900	<ul style="list-style-type: none"> <li><b>MOLgen DNA Streptococcus pneumoniae S1</b></li> </ul> <p>Reagent kit is intended for detection of Streptococcus pneumoniae DNA in clinical specimens by real-time PCR. The kits contain reagents for real-time PCR only.</p>	STR	48
ME155920	<ul style="list-style-type: none"> <li><b>MOLgen DNA Haemophilus influenza S1</b></li> </ul> <p>Reagent kit is intended for detection of Haemophilus influenza DNA in clinical specimens by real-time PCR. The kits contain reagents for real-time PCR only.</p>	STR	48
ME155940	<ul style="list-style-type: none"> <li><b>MOLgen DNA Chlamydomphila pneumoniae S1</b></li> </ul> <p>Reagent kit is intended for detection of Chlamydomphila pneumoniae DNA in clinical specimens by real-time PCR. The kits contain reagents for real-time PCR only.</p>	STR	48
ME155960	<ul style="list-style-type: none"> <li><b>MOLgen DNA Mycoplasma pneumoniae S1</b></li> </ul> <p>Reagent kit is intended for detection of Mycoplasma pneumoniae DNA in clinical specimens by real-time PCR. The kits contain reagents for real-time PCR only.</p>	STR	48
ME155980	<ul style="list-style-type: none"> <li><b>MOLgen Legionella pneumophila S1</b></li> </ul> <p>A set of reagents for the detection of DNA of Legionella pneumophila by PCR in real time. Does not contain reagents for DNA allocation.</p>	STR	48



## TUBERCULOSIS

Code	Kit Name	Format	Number of Tests
ME123990	<ul style="list-style-type: none"> <li><b>MOLgen DNA MBTC</b></li> </ul> <p>Reagent kit is intended for detection of Mycobacterium tuberculosis complex (MBTC) DNA by real-time PCR. The kits contain reagents for real-time PCR only.</p>	UNI	96
METBNT100	<ul style="list-style-type: none"> <li><b>MOLgen MTBC/NTM *</b></li> </ul> <p>Reagent kit is intended for detection of the qualitative simultaneous detection of DNA of MTB Complex (MTBC) and non-tuberculous mycobacteria (NTM) of clinical interest by real-time PCR from DNA extracted from decontaminated human respiratory specimens such as sputum and bronchoalveolar lavage fluid (BALF). The kits contain reagents for real-time PCR only.</p>	4 vials	100
METBNT25			25



For more information

**WWW.ADALTIS.NET**



Customer Care Center:  
e-mail: [info@adaltis.net](mailto:info@adaltis.net)

Technical Assistance:  
e-mail: [service@adaltis.net](mailto:service@adaltis.net)

Legal Registered Office  
Via Durini, 27  
20122 Milano, Italy

Tel: + 39 0774 5791  
Fax: + 39 0774 353085

Sales and Marketing Office  
e-mail: [sales@adaltis.net](mailto:sales@adaltis.net)

Order handling and Logistics  
e-mail: [order@adaltis.net](mailto:order@adaltis.net)

Adaltis S.r.l. Headquarter  
Production and  
Development Plant

Via Luigi Einaudi 7  
Guidonia di Montecelio  
00012 Rome, Italy

ADALTIS is certified in compliance with ISO9001 and ISO 13485.  
Our products are CE-IVD.